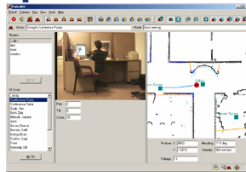




Specifications



Hardware



Software

MECHANICAL

- DIMENSIONS: 20.5 X 20.5 X 39.7cm (8.1 x 8.1 x 15.7 in)
- IP RATING: 51

ELECTRICAL

- 24VDC Power
- Externally accessible fuse
- Avg draw approx. 50 Watts

INTELLIGENCE

- Microcontroller Server: Renesas SH7144-based controller ([specifications](#))
- Embedded PC with Solid State Memory (request latest specs)

LED INDICATORS

- Main power
- Switched power outputs

NAVIGATION

- POSITIONAL REPEATABILITY ACHIEVABLE: +/-150mm unaided; +/-15mm with target; +/-1 mm mechanical
- TYPICAL LOCALIZATION ACCURACY DRIVING AT 2mps: +/- 150mm
- TYPICAL FAILURES PER WEEK: <0.5

SOFTWARE

- μ ARCS server operating system
- Advanced Robotics Automation Management software
- Network communications
- [Training Factory Software](#)
- [Optional: Motivity Developer Modules](#)
- Custom integration and applications



Sensors

- SICK LMS200 (indoor) or LMS220



Standard Connections

- 3 switched 5V outputs (2 A each)
- 4 switched 12V outputs (1 A each)

fabricated, and painted aluminum case

- RANGE: max. 150 m
- with minimum reflectivity 1.8%: 4m
- RESOLUTION: 1 mm at 32 meters
- ACCURACY: +/- 7.5 mm
- ANGULAR RESOLUTION: 100° Scan: 0.25°/0.5°/1.°, 180° Scan: 0.5°/1.° configuration using software
- INTERFACE: RS-232 Serial Interface
- DATA TRANSFER: 38.4 Kbaud
- DIMENSIONS: 155 x 185 156 mm (WxHxD)
- WEIGHT: 4.5 kg
- POWER CONSUMED: max. 17.5 W

out

- Microcontroller System Serial port
- Joystick port (2 axis + throttle, 2 buttons)
- 10BaseT/100Base-TX ethernet port
- 2 wireless ethernet antenna ports (802.11b/g)
- Dedicated Laser connection (power and serial)
- 24V DC power in
- Emergency stop signalling and control. (The black box can monitor the estop lines to see whether an external estop has happened, and is able to throw an estop if it detects an unsafe situation)

COPYRIGHT 2007, MOBILEROBOTS INC. ALL RIGHTS RESERVED.